

# VERY



## Carat Felt XL lamp

It requires art, skill and science to transform a rough stone into a faceted gem. This intricate modular lampshade design was conceived with the same ingredients, and consists of 9 identical segments and an astounding 36 facets. The tactile recycled PET felt used for the shade makes this lamp also an excellent acoustic dampener.

### Material

Recycled PET felt segments, steel frame.

### Packaging quantity

Sold individually.

### Designer

Sander Mulder

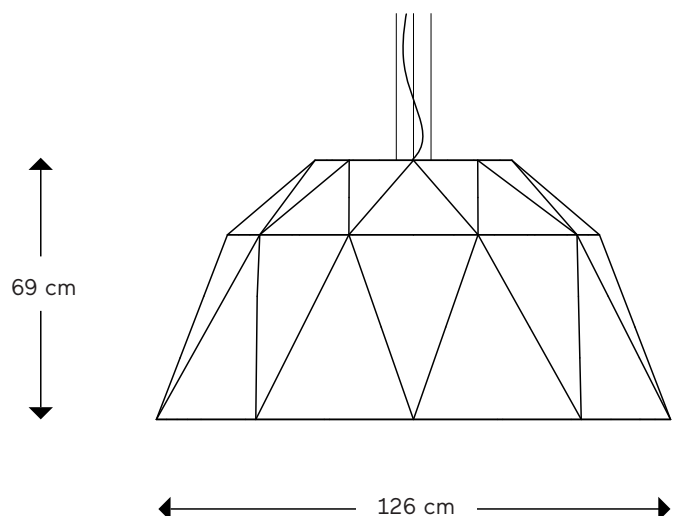


### Felt colors

○ 23 colors available, see next page.

### Ceiling cover-, Cable-, Fitting-, Frame color

● black



# VERY



## PET felt

### Characteristics

A minimum of 50% of our felt is composed of recycled PET beverage bottles.

Thickness: 9 mm

Density: 1.9 kg/m<sup>2</sup>

### Application

Thanks to the large variety of colors we can offer, the felt panels can be used in any environment from office spaces and hotels to public buildings and classrooms.



## Colors

Slight color deviations may occur since PET Felt panels are made from recycled fibers.



Recycled & recyclable



Sound absorption



Fire retardant  
Bsl- 0d0



Made from  
PET bottles



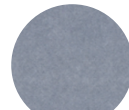
BZ-07



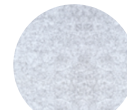
BZ-05



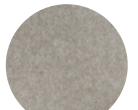
BZ-43



BZ-47



BZ-11



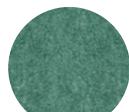
BZ-12



BZ-04



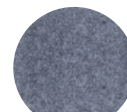
BZ-46



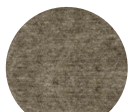
BZ-10



BZ-25



BZ-36



BZ-31



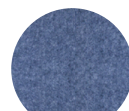
BZ-33



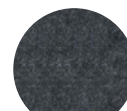
BZ-08



BZ-17



BZ-09



BZ-03



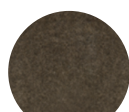
BZ-39



BZ-35



BZ-48



BZ-34



BZ-19



BZ-13